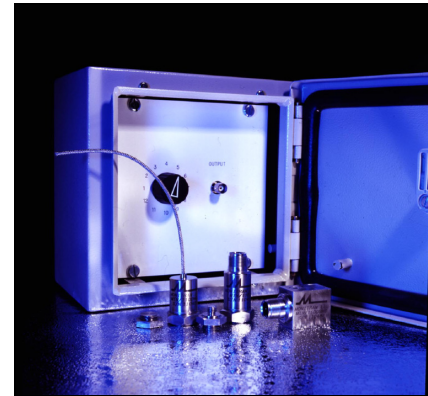


Sensors & Accessories

- Accelerometers
 - Side or Top Entry
 - Integral Cable
 - Intrinsically Safe
 - Submersible
 - High Temperature/Radiation Resistant
 - Rugged Design
 - Dual Temperature & Vibration
 - Simultaneous measurement of: machine vibration, bearing condition and pump cavitation.
 - mV or 4-20mA output
- Velocity Sensors
 - Low Frequency Models
- Piezo Resistive
 - Light Weight Models
- Temperature Sensors
 - Non-contact, RTD, Thermocouples
- Proximity Probes
 - Shaft Position
- Meters & Switches
 - Racking or Wall Mounted
- Junction & Switch Boxes
 - 2-40 Way
- Cables & Connectors
 - Coiled & Uncoiled, 2pin, 3pin, BNC
- Mounting Accessories
 - Spikes, Studs, Disks, Magnets, Adaptors, Extension Pole
- Tools
 - Spot Face
- Other
 - Clip-on Modules, Cable Checker, Signal Simulator, Calibrator
- Services
 - Installation, Calibration, Audits & Support



PRÜFTECHNIK industrial accelerometers for mobile & continuous condition monitoring.



VIBCODE transducer with coded measurement location



Please call for assistance!