

Guide

Guide Infrared, Infrared Guide

MobIR[®] M8

MobIR[®] is a mobile like infrared camera.

- Predictive and Preventative Maintenance
- Electricity Inspections
- Building Diagnostics
- Technical Diagnostics
- Veterinarian Helper

2M
Pixels

4
Hours

5
Modes

AF
IR & Visual

Touch
Screen

IR
Fusion

IR
Video





MobIR® M8 is a new member of **MobIR®** family .No matter how many infrared thermography cameras you have seen, no matter how rigorous your demand is, M8 will be a new surprise. Featuring from smart structure design, great capacity radiometric IR image and IR video recording, auto focusing, touch screen, and IR fusion, it sets up a new milestone for low-end IR cameras.

Using **MobIR® M8** camera, easing your work!

MobIR® M8

With robust and elegant design, the MobIR® M8 refreshes the traditional ideas on the infrared camera, it is light and easy to operate. The 50HZ image fresh rate and roughly 20,000 measurement values allows the reliable measurement and sharp image. This camera is intergrated with many of the features that you could only find in higher-end cameras before, which starts another IR revolution of the top functions and operations applied to the 160x120 infrared camera.

- 160x120 IR resolution
 - $\leq 100\text{mK}$ NETD
 - 2X digital zoom
 - Voice Comments
 - Text Annotation
- ...more continued...*



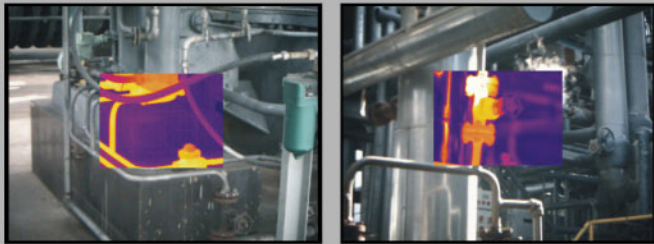
Rugged Design

The magnesium housing grants M8 with characters of light weight, ruggedization, and strong anti-interference capability. Silicon rubber protecting jacket offers double protection for the precise detector, electronics and optics.



Elegant Vision

With the practical and innovative design, the **MobIR® M8** refreshes the traditional ideas on the infrared camera. It is a mobile like instrument, small in your palm intergrated with the advanced infrared technology.

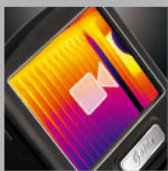


IR Fusion Technology

Guide' s new Thermal Fusion Technology allows you to overlay the thermal image directly on the corresponding visual image. It would help you identify where the problem exactly is and give the solutions.

Light Weight and Easy Operation

Continued the classical mobile like shape and the unique "bar phone" design, M8 is designed according to ergonomics for more comfortable feeling during use. See what you can' t see. In some tough situation, some place will be hidden, but the small size camera body and adjustable LCD angle ensures you the best angle of view during the operation.



Live Video Recording

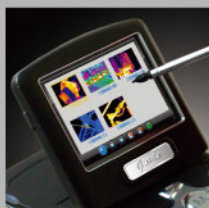
Recording live video on board or into PC via USB2.0 helps memorize continuous temperature change of the target, ideal for various stationary monitoring applications.

Auto Capture

No longer watching for capturing, operators now can be hands free .The camera can automatically capture images at a regular time interval, which makes the timing recording be realized.

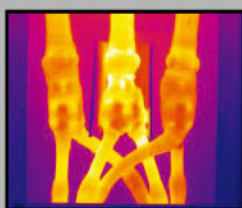
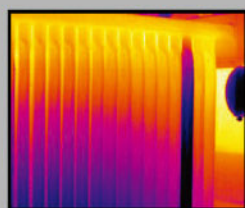
5 Modes of Operation

The button? The touch screen? The W/T wheel? The USB2.0 interface or the infrared remote controller? You can choose whichever type you like. These 5 operation modes make you operate the camera easily and fast.



2.0 Megapixel CMOS

Integrated high-resolution CMOS delivers extremely crisp visual image, assistance of clearer and better fusion image, spotting potential problem exactly.



Auto Focus for Both IR and Visual Image

The automatic focus function is unprecedentedly adopted in IR camera of 160x120 pixels.

both clear infrared and visual image can be focused by simply pressing one button.

AGT[®]-Auto Gate Technology

The specially designed gate works as both shutter and intelligent lens cap. It can not only avoid the negative influence to NUC caused by heat radiation inside the camera, but also close automatically to protect IR lens and sensitive FPA when the camera is under "sleep" mode or off mode.



Touch Screen

The unique touch screen delivers many advanced and complicated analyses that the buttons can not do.

4 Hours Super Long Working Time

Superior long working time ensures uninterrupted high efficient work, no worry about the inconvenience caused by low power any more.



Technical Specifications

M8	
Imaging Performance	
Thermal	
Detector Type	Microbolometer UFPA (160x120 pixels, 25µm)
Spectral Range	8-14µm
Field of View	20.6° X 15.5°
Focus	Automatic and motorised (thermal & visual)
Thermal Sensitivity	≤100mk at 30°C
Image Frequency	50HZ PAL/ 60HZ NTSC, non-interlaced
Electronic Zoom	X2
Palette	8
Visual	
Built-in Digital Video	CMOS Sensor, 1600x1200 pixels, 2 ²⁴ true colors
Image Presentation	
External display	2.47" TFT LCD with high resolution
Video output	PAL/NTSC
IR fusion	Visual and IR blending
Man-Machine Communication	
Touch Screen	Yes
Button	Yes
USB2.0	Yes
W/ T wheel	Yes
Infrared Remote Controller	Yes
Measurement	
Temperature Range	-20°C to 250°C (350°C optional)
Accuracy	±2°C or ±2% of reading
Measurement modes	Auto hot & cold spot, auto alarm live/zoned image & video; 4 movable spots, 4 movable and changeable areas displaying either max, min or average, line profile, histogram & isotherm band in live/frozen/saved image
Emissivity Correction	Variable from 0.01 to 1.00, on-screen emissivity correction available
Measurement Features	Automatic correction based on distance, relative humidity, atmospheric transmission and external optics
Optics Transmission Correction	Auto, based on signals from sensors
Image Storage	
Type	Removable 2GB Mini SD card & built-in memory
File format	JPG with analysis records
Voice Annotation	Up to 60 seconds
Text Annotation	Selected from preset texts or Customized
Automatic Image Capture	Yes
Live Video Recording & Measurement & Storage	
Recording	Powerful recording up to 30 minutes in Mini SD card
Measurement	Automatic Max & Min temperature
Storage	In Mini SD card, built-in flash memory or PC
Optional Accessories	
Lenses	30mm
Target Illuminator	Yes
Infrared Remote Controller	Yes
Sun Shield	Yes
Silicon Rubber Protecting Jacket	Yes
Tripod	Yes
Laser Locator	
Classification Type	Class 2 semiconductor laser
Power System	
Battery Type	Rechargeable Li-ion Camcorder battery, field-replaceable
Charging System	In camera or in battery charger
Battery Operating Time	4 hours continuous operation
External Power Operation	AC adapter 110/220VAC, 50/60Hz
Environment	
Operating Temperature	-10°C to 60°C
Storage Temperature	-20°C to 60°C
Humidity	Operating and storing 10% to 95%, non-condensing
Encapsulation	IP54 IEC 529 housing
Shock	Operational: 25G, IEC68-2-29
Vibration	Operational: 2G; IEC68-2-6
Interface	
USB2.0	Real-time image, video data transfer to PC and real-time control of the camera on PC
RS232 communication	Control of camera on PC
Physical Characteristics	
Size	154mmx69mmx45mm
Weight	0.35KG (including battery) 0.27KG (excluding battery)

Represented By:

apt Risk Management Pty Ltd
 Address: 5/13-15 Wentworth Ave
 SYDNEY NSW 2000 AUSTRALIA
 Tel: 1300 700 002
 Fax: 1300 448 002
 Email: info@aptgroup.com.au
 Website: www.aptarou.com.au