



ATPOL II™

ALL-TEST PRO® ON-LINE II



For Complete Electrical Signature Analysis (ESA)

The Most Complete Electrical Signature and Power Analysis Instrument on the Market!
Superior Analytical Power for AC & DC motors, Synchronous Motors, Generators, and Transformers!

- SAFE: CAT IV RATING FOR 600 V
- RUGGED: TOUGH CASE WITH RUBBERIZED BOTTOM
- EASY TO CARRY - EASY TO USE: LIGHTWEIGHT, HANDHELD - USER FRIENDLY
- UNLIMITED MEMORY: REPLACEABLE MEMORY CARD AVAILABLE
- WARRANTY: TWO YEARS LIMITED
- CE CERTIFIED
- WIRELESS BLUETOOTH: NO CABLE FROM ATPOL II TO PC
- ECONOMICAL AND QUICK RETURN ON INVESTMENT: LOWEST COST ON THE MARKET TODAY
- SERVICE BACK-UP AND FREE EMAIL AND PHONE SUPPORT
- PROFESSIONAL TRAINING AVAILABLE IN GROUPS OR IN YOUR OWN PLANT - WORLD WIDE

COMPLETE MOTOR ELECTRICAL SIGNATURE ANALYSIS AND POWER ANALYSIS FOR AC/DC MOTORS, GENERATORS, AND TRANSFORMERS

EASY TO CARRY - EASY TO USE

The ATPOL II™ (ALL-TEST PRO® ON-LINE II) tester is the most complete On-Line Motor and Power Diagnostic instrument available today – all in a hand held, lightweight instrument. Rugged case with rubberized bottom for a safe grip. No need to carry a PC or other heavy equipment in the field, the ATPOL II fits in a small pouch, which can be slung over the shoulder or carried in a tool-belt.

No need to enter nameplate data before data collection, only prior to analysis!

Should you make a mistake when entering data – no problem. Just correct the data before analysis.

CAT IV – THE ATPOL II HAS THE INDUSTRY'S HIGHEST SAFETY STANDARDS

The ATPOL II has passed the highest standards for 600V and is suitable for testing at the service entrance.

SUPERIOR DIAGNOSTIC POWERS – SMART & AUTOMATIC

The ATPOL II offers many Software and Data Analysis Advantages including key determinations are made automatically, such as:

- Line Frequency, Running Speed and Pole Pass Frequency
- Software Automatically looks for patterns related to Stator Slot and Rotor Bar fault frequencies
- Automatic detection of Static or Dynamic Eccentricity faults
- Evaluation of Incoming Power including Harmonics
- Calculates Efficiency for AC Induction & DC Motors
- Power Analysis includes Sag/Swell and Transient Detection plus Energy Consumption Data Logging

The ATPOL II delivers superior AC diagnostics for the evaluation of the health of the Stator Electrically and Mechanically, Rotor, Air Gap, and evaluates the entire driven load (belted, geared, bladed, etc.). The instrument also provides excellent Diagnostics for DC motors, Generators, and Transformers.

ALWAYS KNOW YOUR CONNECTIONS ARE CORRECT

Verify Connections feature analyzes voltage and current connections to make sure they are installed correctly. No more misses or strange results due to faulty application of the leads!

UNLIMITED MEMORY

SD Memory Card slot provides unlimited storage for your test data!

NO PC COMMUNICATION CABLE NECESSARY

The ATPOL II is equipped with Bluetooth®* wireless transmission from instrument to PC. No need to keep track of additional cables.

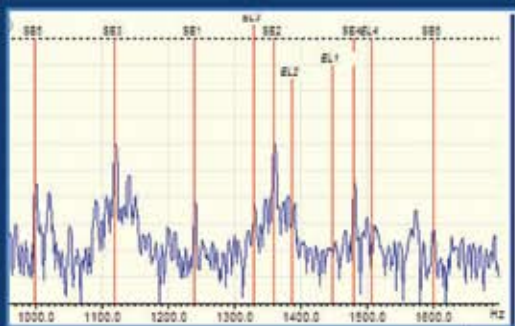
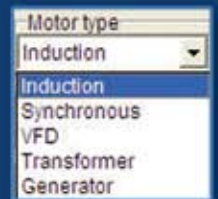
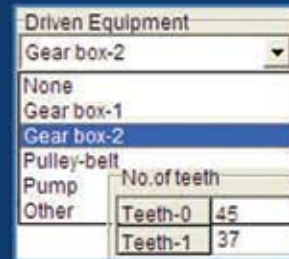
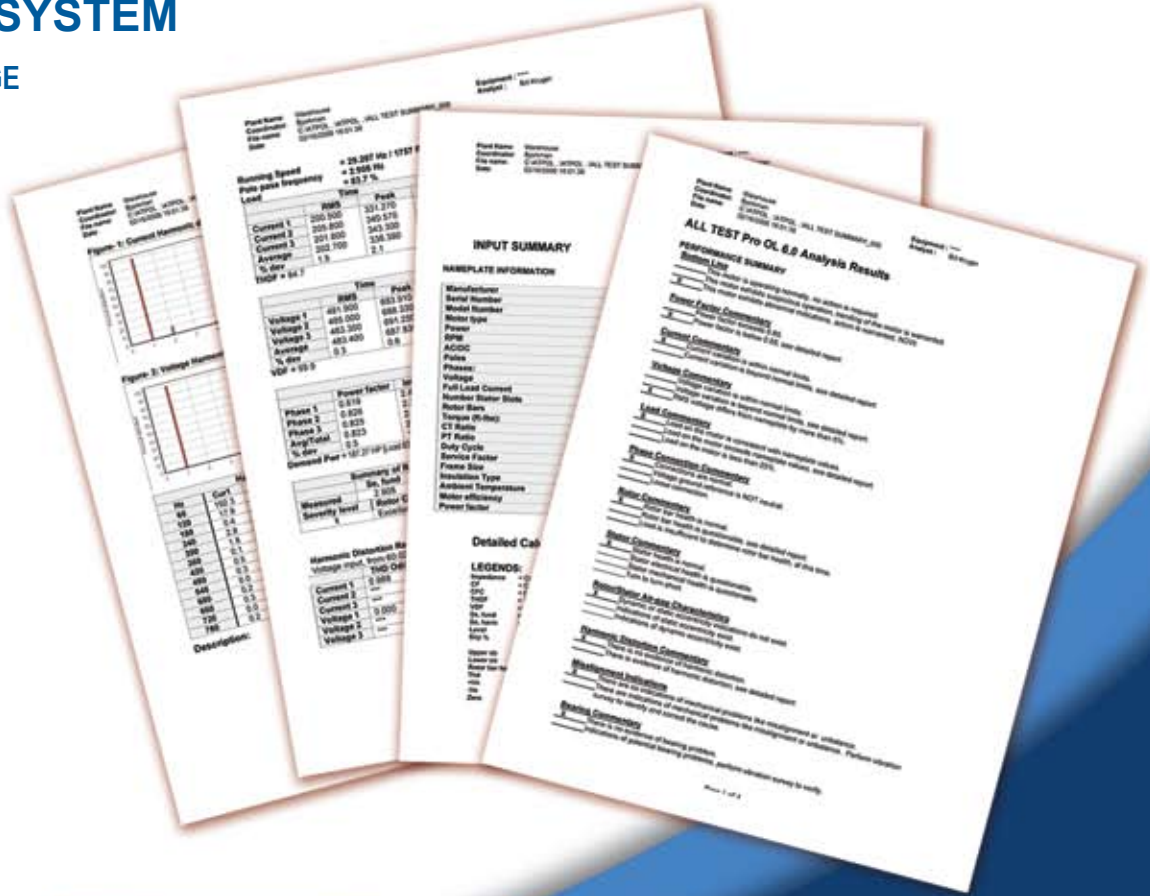
* Bluetooth® is a registered trade mark of Bluetooth SIG, Inc.



TOOLS TO ANALYZE AND REPORT BOTH THE *ELECTRICAL AND MECHANICAL* CONDITION OF THE ENTIRE MOTOR OR GENERATOR SYSTEM

COMPREHENSIVE 4 PAGE SUMMARY REPORT DETAILING THE CONDITION OF THE CIRCUIT MAKES YOUR JOB A LOT EASIER!

Automatic analysis of the electrical and mechanical system for Induction, DC, and Synchronous motors; plus Generators, Transformers, and VFD's.



Calculates and identifies mechanical as well as electrical faults.

ATPOL II Automatically Identifies and reports Common DC Motor faults, such as broken armature, faulty SCR's, etc.

ALL-SAFE PRO™

**PERMANENTLY INSTALLED TEST PANEL FOR HIGHER PRODUCTIVITY,
SAFER ENVIRONMENT AND GOOD OPERATOR CONDITIONS**

The perfect compliment to the ATPOL II.

The ALL-SAFE PRO connection box eliminates the need for the operator to suit up in special protective clothing, speeds up the test considerably by eliminating the need to open the panel for placing probes and clamps on energized leads. Installation takes only about one hour, using simple commonly used tools.

The output pins are deactivated when not connected to the ATPOL II so there is no risk for exposure to dangerous voltage.

CSA, UL, and CE listed.



ALL-TEST PRO®

ALL-TEST PRO® ALSO OFFERS OFF-LINE TESTING FOR TROUBLE SHOOTING, PREDICTIVE MAINTENANCE AND QUALITY CONTROL

The ALL-TEST IV PRO for de-energized testing pin-points early turn-to-turn and coil-to-coil faults, rotor faults, open windings, shorts to ground and any imbalance between phases. Instrument shows immediate results on screen, uploadable to software for further Analysis, Trending and Reporting.

The ALL-TEST PRO 31 is the perfect tool for Trouble Shooting and Quality Control of de-energized motors, rotors, coils and windings. A must have tool for a serious electrician working with motors.

No other testing equipment for electric motors, generators and transformers gives you a more accurate, easy to use and economical way to keep your motors and windings healthy.



Off-line testing for complete analysis of windings and rotor

Off-line testing for Trouble-Shooting and Incoming Inspection



The ATPOL II™ includes:

- ALL-TEST PRO® OL II handheld data collector (1)
- 0.1 – 100A portable current transformer (4)
- 1 – 1000A portable current transformer (4)
- Voltage test leads and clips (4)
- AC battery charger 115V or 230V (1)
- Hard sided carrying case (2)
- ESA & PSM software (1 each)
- User manual on CD
- Warranty card (1)

SPECIFICATIONS

- ATPOL II weight: Less than 2 lbs (0.9 Kg)
- ATPOL II size: 3 ¾" wide x 7 ½" long x 2" deep
(95 mm W x 190 mm L x 50 mm D)
- Gross weight for shipping: 17 lbs. (7.7Kg)
- Gross size for shipping: 26" x 8" x 16"
(66 cm x 20.3 cm x 40.6 cm)

For complete technical specification see separate ATPOL II specification sheet.

ALL-TEST Pro, LLC

Represented by:

apt Risk Management Pty Ltd
5/ 13-15 Wentworth Avenue
SYDNEY NSW 2000
Tel: 1300 700 002
Fax: 1300 448 002
E-mail: info@aptgroup.com.au
Web: www.aptgroup.com.au